

View

[View](#)

[Summary](#)

[How It Works](#)

[Rationale](#)

[Issues](#)

Summary

USER NEED

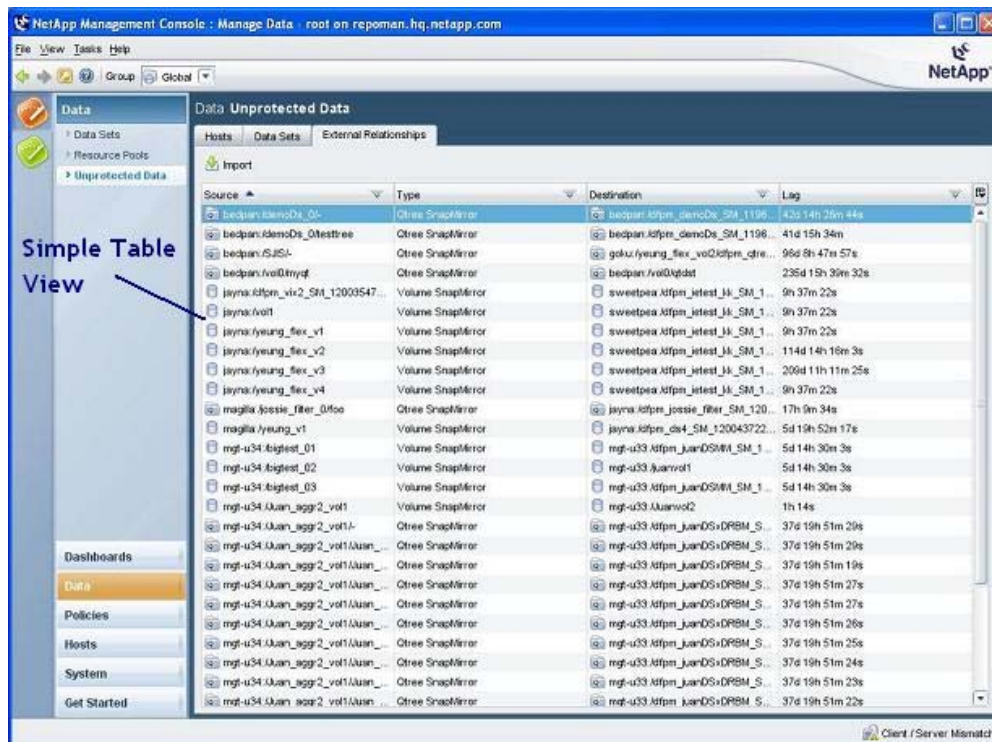
Users need a way to:

- Select an object
- View essential information about it
- Act on it

USE WHEN

- An application has many different objects of the same type

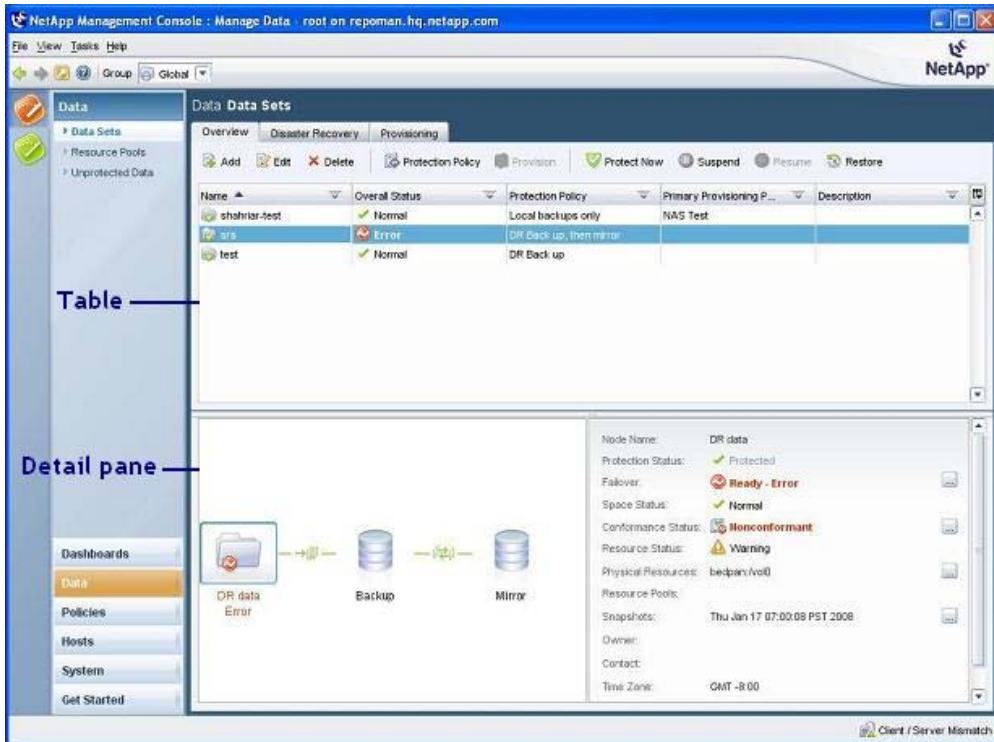
EXAMPLE



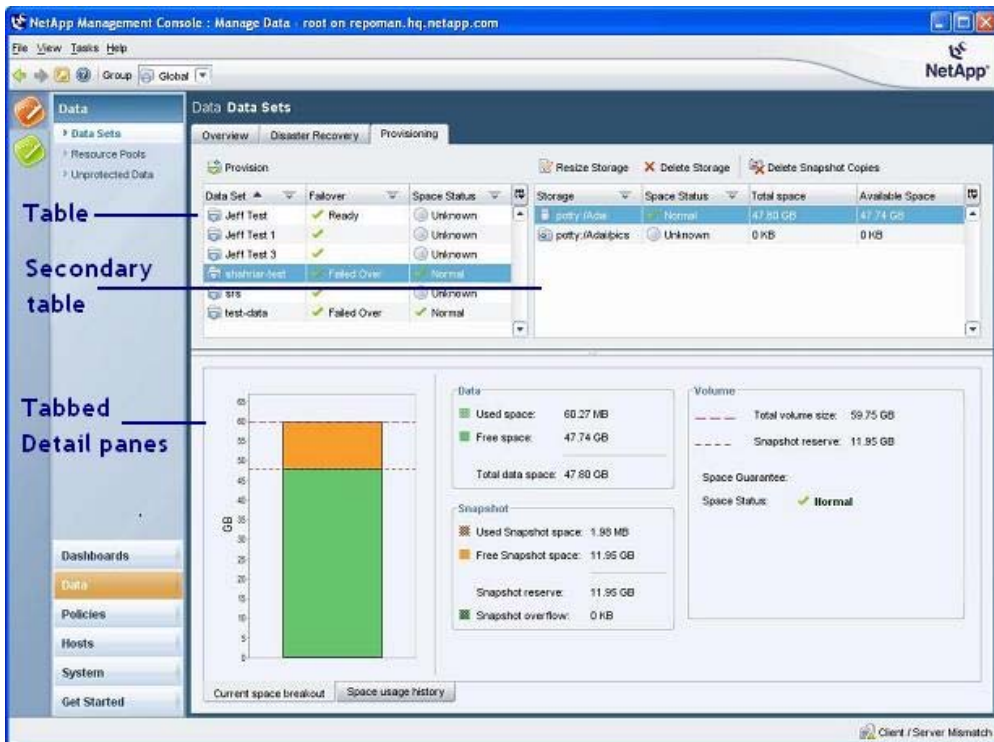
The screenshot shows the NetApp Management Console interface. The main window displays a table titled "Data Unprotected Data" with columns for Source, Type, Destination, and Lag. The table lists various data sets and their configurations. A blue arrow points to the table with the text "Simple Table View".

Source	Type	Destination	Lag
bedpan:demods4_01	Other SnapMirror	bedpan:afpm_demods4_SM_1198	42s 14h 26m 44s
bedpan:demods4_01testree	Other SnapMirror	bedpan:afpm_demods4_SM_1198	41s 15h 34m
bedpan:SUJSI-	Other SnapMirror	goku:yeong_flex_vol2:afpm_cfr...	96s 8h 47m 57s
bedpan:vol0:myof	Other SnapMirror	bedpan:vol0:qtdst	23s 15h 39m 32s
jayna:afpm_vol2_SM_12009547...	Volume SnapMirror	sweetpea:afpm_test_jk_SM_1...	9h 37m 22s
jayna:vol1	Volume SnapMirror	sweetpea:afpm_test_jk_SM_1...	9h 37m 22s
jayna:yeong_flex_v1	Volume SnapMirror	sweetpea:afpm_test_jk_SM_1...	9h 37m 22s
jayna:yeong_flex_v2	Volume SnapMirror	sweetpea:afpm_test_jk_SM_1...	114s 14h 16m 3s
jayna:yeong_flex_v3	Volume SnapMirror	sweetpea:afpm_test_jk_SM_1...	20s 11h 11m 25s
jayna:yeong_flex_v4	Volume SnapMirror	sweetpea:afpm_test_jk_SM_1...	9h 37m 22s
magile:jessie_filer_0:foe	Other SnapMirror	jayna:afpm_jessie_filer_SM_120...	17h 9m 34s
magile:yeong_v1	Volume SnapMirror	jayna:afpm_dsk4_SM_120043722...	5d 19h 52m 17s
mgt-u34:bigtest_01	Volume SnapMirror	mgt-u33:afpm_juands:DRBM_S...	5d 14h 30m 3s
mgt-u34:bigtest_02	Volume SnapMirror	mgt-u33:juandvol1	5d 14h 30m 3s
mgt-u34:bigtest_03	Volume SnapMirror	mgt-u33:afpm_juands:DRBM_S...	5d 14h 30m 3s
mgt-u34:juan_agg2_vol1	Volume SnapMirror	mgt-u33:juandvol2	1h 14s
mgt-u34:juan_agg2_vol1:1	Other SnapMirror	mgt-u33:afpm_juands:DRBM_S...	37s 19h 51m 29s
mgt-u34:juan_agg2_vol1:juan...	Other SnapMirror	mgt-u33:afpm_juands:DRBM_S...	37s 19h 51m 29s
mgt-u34:juan_agg2_vol1:juan...	Other SnapMirror	mgt-u33:afpm_juands:DRBM_S...	37s 19h 51m 19s
mgt-u34:juan_agg2_vol1:juan...	Other SnapMirror	mgt-u33:afpm_juands:DRBM_S...	37s 19h 51m 27s
mgt-u34:juan_agg2_vol1:juan...	Other SnapMirror	mgt-u33:afpm_juands:DRBM_S...	37s 19h 51m 27s
mgt-u34:juan_agg2_vol1:juan...	Other SnapMirror	mgt-u33:afpm_juands:DRBM_S...	37s 19h 51m 26s
mgt-u34:juan_agg2_vol1:juan...	Other SnapMirror	mgt-u33:afpm_juands:DRBM_S...	37s 19h 51m 25s
mgt-u34:juan_agg2_vol1:juan...	Other SnapMirror	mgt-u33:afpm_juands:DRBM_S...	37s 19h 51m 24s
mgt-u34:juan_agg2_vol1:juan...	Other SnapMirror	mgt-u33:afpm_juands:DRBM_S...	37s 19h 51m 23s
mgt-u34:juan_agg2_vol1:juan...	Other SnapMirror	mgt-u33:afpm_juands:DRBM_S...	37s 19h 51m 22s

A simple view with just a list



A view with a list and below it, a detail pane with information about the item selected in the list



A view with a list, a secondary list, and below them, a tabbed set of detail panes with information about the item selected in the primary list

How It Works

GETTING TO IT

Each item in the [navigation pane](#) is associated with a view:

- If a main item in the navigation pane has no sub-items, selecting the item displays its view.
- If a main item has sub-items, selecting a sub-item displays the view associated with it.
- If a sub-item has [tabs](#), selecting a tab displays the view associated with it.

DEFAULT BEHAVIORS

Initial state:

- The list's defaults -- the columns that are displayed, the column widths, the list's sort order -- are in effect.
- The first item in the list is selected.
- If a view has a tabbed [detail pane](#), the leftmost tab is selected.
- Information about the item selected in the list appears in the detail pane.

Thereafter:

- The item that's selected in the list remains selected throughout the session -- even if the user goes to a different view -- until the user selects a different item.
- For information about the behavior of the elements of the list, see [Manage Column button](#), [Filter button](#), and [Table management features](#).
- See [detail pane](#) for information about its behaviors.

INTERACTING WITH IT



Selecting an item in the view's list:

- Displays information about the item
- Enables the user to use the action buttons or the commands in the context menu to act on the item

ACTION BUTTONS




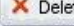


Every view has one or more [action buttons](#) associated with it.

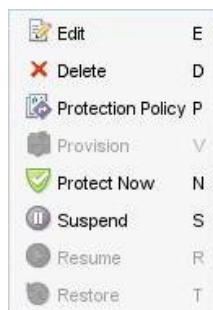
Clicking an action button:

- Carries out the action on the item that's selected in the list. (Except for Add: instead Add inserts a new item in the table.)

Several actions are common to many views:

-  (see [Add wizard](#))
-  (see [Edit dialog box](#))
-  (see [Copy button](#))
-  (see [Delete button](#))

CONTEXT MENUS



Right-clicking an item in a list selects it (if it's not already selected) and displays a context menu of commands that duplicate the action buttons.

Clicking a command:

- Carries out the command on the item that's selected. (See [context menu](#) for details.)

TABLE MANAGEMENT CONTROLS



Clicking the **Manage Columns button** displays a menu that enables users to:

- Add and remove columns
- Display a horizontal scroll bar
- Resize the columns to fit the width of the list

For details see [Manage Column button](#).

**Clicking the Filter button:**

- Displays only the items that match the filter criteria (For details see [Filter button.](#))

**Clicking a column heading:**

- Sorts the column by the contents of the column. (For details see [Table management features.](#))

**Dragging a column heading:**

- Moves the column to a new location in the list. (For details see [Table management features.](#))

Dragging the column splitter:

- Resizes the column to the left of the splitter. (For details see [Table management features.](#))

Dragging the pane splitter below the list:

- Shortens or lengthens the list. (For details see [Table management features.](#))

INTERFACE STATES

A list item can have either of two states: selected or unselected.

For the interface states of the other components of a view see:

- [Tabs](#)
- [Action buttons](#)
- [Manage Column button](#)
- [Filter button](#)
- [Table management features](#)
- [Copy button](#)
- [Delete button](#)
- [Detail pane](#)
- [Context menu](#)

Rationale

Views provide a consistent interface for focusing on a single object in the system, getting basic information about it, and acting on it.

Issues

Issue: None.

-- [JeffreySchwamberger](#) - 12 Feb 2008

r7 - 14 Oct 2008 - 18:08:53 - [JeffreySchwamberger](#)
